

## Scale and arpeggio patterns

The examples on the following pages clarify patterns and ranges found in this syllabus. Reference should be made to the appropriate syllabus pages for the full requirements for each instrument.

### All instruments

#### Scales and arpeggios

to a twelfth



one octave and down to the dominant



Melodic minor ending (*E♭ Soprano Cornet only*)



#### Scales in thirds

one octave (and similarly, two octaves)



#### Dominant sevenths (resolving on tonic)

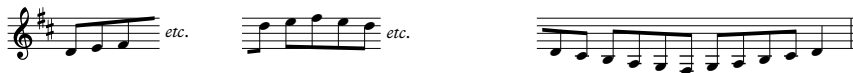
one octave (and similarly, two octaves)



## Trumpet, Cornet, Flugelhorn, E $\flat$ Horn, Baritone, Euphonium, Trombone & Tuba (♩)

### Extended-range scales

D major



A $\flat$  major



G harmonic minor



### Extended-range arpeggios

D major



A $\flat$  major



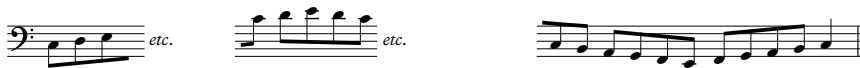
G minor



## Trombone, Baritone & Euphonium (b $\flat$ )

### Extended-range scales

C major



F# major



F harmonic minor



### Extended-range arpeggios

C major



F# major



F minor

